

Contents

**Contents** ..... 3

**Conventions** ..... 8

How the mouse works: ..... 8

How the keyboard works: ..... 8

**The user interface** ..... 9

**The toolbars** ..... 10

Opening a toolbar: ..... 10

Closing a toolbar: ..... 10

Moving a docked toolbar: ..... 10

Moving a toolbar on the drawing surface: ..... 10

**“Snappy Dialogs” dialog boxes** ..... 11

Opening a dialog box: ..... 11

Closing a dialog box: ..... 11

Minimizing a dialog box: ..... 11

**Opening, saving and closing** ..... 12

Starting a new drawing: ..... 12

Choose a unit for all new drawings: ..... 12

Choosing a unit for the current drawing: ..... 13

Opening an existing drawing: ..... 13

Saving a drawing: ..... 13

**Zoom functions** ..... 14

“Pan”: ..... 14

“Zoom”: ..... 14

“Zoom Window”: ..... 14

“Previous/Next”: ..... 14

“Zoom Extents”: ..... 14

**Drawing functions** ..... 15

Choosing the color of lines and faces: ..... 15

Drawing a “Rectangle” of a given size: ..... 16

Drawing a “Line” of a given length: ..... 16

Drawing a “Circle” of a given radius: ..... 16

Drawing an “Arc” with a “bulge”: ..... 16

Drawing an “Arc” of a given radius: ..... 17

Drawing a “Polygon”: ..... 17

Drawing with the “Freehand Pencil”: ..... 18

**Drawing methods and aids** ..... 19

Different types of inference (magnet) function: ..... 19

“Linear Inference”: ..... 19

How to use “Linear Inference”: ..... 20

Drawing example: “Inference Locking”: ..... 21

Drawing example: “Drawing parallel to another line”: ..... 22

Drawing example: "Borrowing a starting point from another point": ..... 23

Drawing example: "Borrowing a starting point from several points": ..... 24

**Lock the direction along the green, red or blue axis:..... 25**

**Selecting objects ..... 26**

**Selecting a single object: ..... 26**

**Selecting more than one object: ..... 26**

**Deselecting objects:..... 26**

**Selecting/deselecting objects:..... 26**

**Selecting multiple objects with "Window": ..... 27**

**Selecting multiple objects with "Crossing Window":..... 27**

**Views..... 28**

**Iso View: ..... 28**

**Top View:..... 28**

**Front View: ..... 28**

**Right View: ..... 28**

**Back View: ..... 28**

**Left View: ..... 28**

**Basic 3D..... 29**

**Creating a 3D model with "Push/Pull": ..... 29**

**Creating a 3D model the same height as another object: ..... 30**

**Pulling out part of a face:..... 31**

**Creating segments:..... 32**

        Drawing example: "3D drawing with "Inference": ..... 33

        Drawing example: "Auto-Fold": ..... 35

**Modification functions ..... 36**

**Functions in the "Edit" toolbar:..... 36**

**Moving objects:..... 37**

**Copying objects: ..... 38**

**Multiple copying:..... 39**

**Manually enabling Auto-Fold:..... 40**

**Rotating objects: ..... 42**

**Rotating and copying objects:..... 43**

**Scaling objects and lines:..... 44**

**Mirroring objects and lines: ..... 46**

**Offsetting lines: ..... 47**

**Trimming: ..... 48**

**Dividing an object into parts: ..... 48**

**Guides - Construction lines ..... 49**

**Constructions lines with "Tape Measure":..... 49**

        Drawing example: Construction lines with "Tape Measure": ..... 50

**Construction lines with "Protractor": ..... 52**

        Drawing example: "2D angles":..... 53

        Drawing example: "3D using Protractor": ..... 54

**Advanced 3D..... 56**

**Drawing profiles with "Follow me": ..... 56**

Drawing example "Round forms" with "Follow me": ..... 57

Creating compound forms with "Intersect with model": ..... 58

**Styles - Graphical settings ..... 59**

    How to choose a "Style": ..... 59

    Creating a "Style" of your own:..... 60

    Copying properties from an existing style:..... 64

**Edge settings: ..... 66**

        Display Edges: ..... 66

        Profiles: ..... 66

        Depth Cue: ..... 67

        Extension: ..... 67

        Endpoints: ..... 68

        Jitter: ..... 68

        Edge Color: ..... 69

        Halo: ..... 70

        Detail: ..... 70

**Face settings: ..... 71**

        Front color: ..... 71

        Back color: ..... 71

        Display in wireframe mode: ..... 71

        Display in hidden line mode: ..... 72

        Display in shaded mode: ..... 72

        Display shaded using textures: ..... 72

        Display shaded using all same: ..... 72

        Display in x-ray mode: ..... 73

        Enable transparency: ..... 73

        Quality: ..... 73

**Background settings: ..... 74**

        Background: ..... 74

        Sky: ..... 74

        Ground: ..... 74

        Transparency: ..... 74

        Show ground from below: ..... 74

**Watermarks: ..... 75**

        Adding a watermark: ..... 75

        Editing a watermark: ..... 77

        Deleting a watermark: ..... 77

**Modeling settings:..... 78**

**Measuring lengths and angles ..... 79**

    Measuring distances: ..... 79

    Measuring the distance between two points that are not in line: ..... 79

    Measuring angles:..... 80

**Dimensioning ..... 81**

    Dimensioning objects: ..... 81

    Dimensioning between two points: ..... 81

    Dimensioning circles: ..... 82

Dimensioning arcs: ..... 82

Moving a dimension: ..... 82

**Adding text ..... 83**

    Text with arrow: ..... 83

    Freestanding text: ..... 84

    3D Text: ..... 84

    Editing text content: ..... 85

**Layers ..... 86**

    Choosing a layer to draw on: ..... 86

    Creating a layer: ..... 87

    Changing the layer for an existing object: ..... 87

**Camera and viewpoints ..... 88**

    "Position Camera": ..... 88

    "Walk around": ..... 88

    "Look around": ..... 88

**Groups ..... 89**

    Creating a group: ..... 90

    Editing a group: ..... 91

**Components ..... 92**

    How the component library works: ..... 92

    Creating the component: ..... 93

    Placing a component: ..... 94

    Rotating a group/component: ..... 95

    Exporting a component from the component library: ..... 96

    Reloading a component in the drawing: ..... 96

    Editing a component: ..... 97

    Editing individual components: ..... 98

**Component management with "Outliner" ..... 99**

    How "Outliner" works: ..... 100

**Colors and materials ..... 101**

    How the Materials Library works: ..... 101

    Painting faces: ..... 102

    Painting faces the same color as another face: ..... 102

    Creating your own color: ..... 102

    The color editor functions: ..... 103

    Creating your own material: ..... 104

    Changing the scale of a material image: ..... 105

**Sections ..... 106**

    Creating section plane: ..... 106

    Moving a section plane: ..... 107

    Reversing a section plane: ..... 107

    Showing/hiding a cut-away part: ..... 108

    Showing/hiding section planes: ..... 108

    Enabling/disabling section planes: ..... 109

**Importing images ..... 110**

Importing images: ..... 110

Resizing the image:..... 111

**Importing AutoCAD files ..... 112**

    Importing drawing:..... 112

    Making the drawing three-dimensional:..... 113

**Exporting images and drawings..... 114**

    Exporting images: ..... 114

    Exporting a 2D drawing to AutoCAD:..... 115

    Exporting a section: ..... 116

**Working with shadows ..... 117**

    Open the “Shadow Settings” dialog box:..... 117

    What types of object will be casting/receiving shadows? ..... 118

    Choosing a geographical location:..... 119

    Enabling shadows: ..... 119

**Scenes and Creating slideshows ..... 120**

    Creating slideshow: ..... 120

    Updating a scene with settings: ..... 121

    Changing slideshow settings:..... 121

    Saving a slideshow as a video animation: ..... 122

**Printouts..... 123**

    Useful information: ..... 123

    Choosing paper and printer:..... 123

    Printing:..... 124

**“Model Info” ..... 125**

    Under “Animation” you can set: ..... 125

    Under “Components” you can set: ..... 125

    Under “Dimensions” you can set:..... 126

    Under “File” you can set: ..... 127

    Under “Location” you can set:..... 127

    Under “Statistics” you can set: ..... 127

    Under “Text” you can set: ..... 128

    Under “Units” you can set:..... 128

**“Preferences” ..... 129**

    Under “Compatibility” you can set: ..... 129

    Under “Drawing” you can set:..... 129

    Under “Extensions” you can set:..... 130

    Under “Files” you can set:..... 130

    It is useful to have backups of your settings in case your computer “crashes”. ..... 130

    Under “General” you can set:..... 131

    Under “OpenGL” you can set:..... 131

    Under “Shortcuts” you can set:..... 131

    Under “Templates” you can: ..... 132

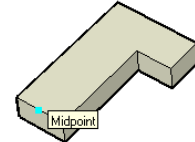
Drawing example: "Auto-Fold":

With "Auto-Fold" you can move a line that connects faces. Faces and lines connected to the line are "folded".

1. Click the "Line" button in the "Drawing" toolbar or press "L" on the keyboard.

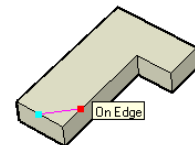


2. Position the cursor over one "gable end". The word "Midpoint" appears at the cursor.

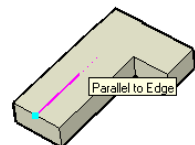


3. Left-click to place the line.

4. Without clicking, position the cursor over the edge line of one of the long sides. The words "On Edge" or "Midpoint" appear at the cursor.

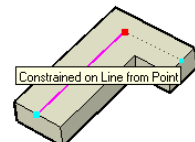


5. Without clicking, move the cursor inwards until "Parallel to Edge" appears. The line is parallel to the long side.



6. Press and hold down the [Shift] key. The line becomes thick.

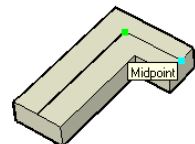
7. Position the cursor over the midpoint of the other "gable end". The words "Constrained on Line from Point" appear at the cursor.



8. Left-click to place the line.

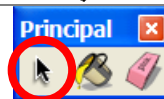
9. Release the [Shift] key.

10. Position the cursor over the midpoint of the "gable end". The word "Midpoint" appears at the cursor.



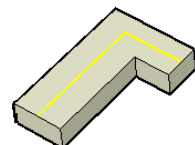
11. Left-click to place the line.

12. Click the "Select" button in the "Principal" toolbar or press the spacebar.



13. Now press the [Ctrl] key. (Mac: Option-key) A plus sign appears at the cursor.

14. Left-click on the roof lines. They are highlighted.

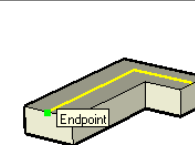


15. Release the [Ctrl] key. (Mac: Option-key)

16. Click the "Move/Copy" button in the "Edit" toolbar or press "M" on the keyboard.

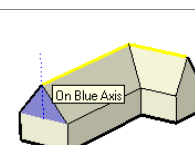


17. Position the cursor over the endpoint of one of the lines. The word "Endpoint" appears at the cursor.



18. Left-click to place the line.

19. Move the cursor upwards along the blue axis. The words "On Blue Axis" appear at the cursor.

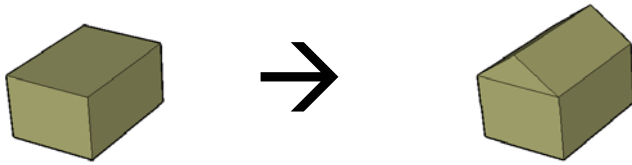


20. In the Value Control Box (VCB), enter the height you want.

21. Press <Enter>.

Drawing example: "3D using Protractor":

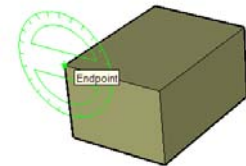
Say you want to add a roof to the shape on the left below.



1. Click the "Protractor" button in the "Construction" toolbar.

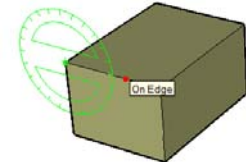


2. Position the cursor over the top left-hand corner of the model. The word "Endpoint" appears at the cursor.



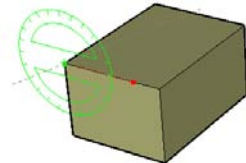
3. Left-click to place the protractor.

4. Move the cursor along an imaginary zero line, ie the line from which you want to specify the angle.



5. Left-click to place the zero line.

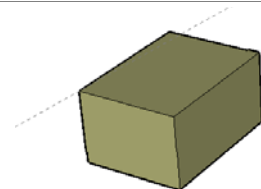
6. Now move the cursor upward.



7. In the Value Control Box (VCB), enter an angle.

8. Press <Enter>.

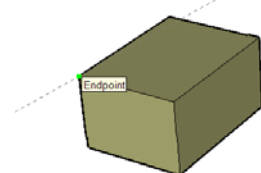
9. You have now created a construction line at the angle you wanted.



10. Click the "Line" button in the "Drawing" toolbar or press "L" on the keyboard.

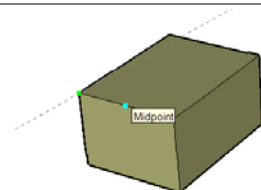


11. Position the cursor over the top left-hand corner of the model. The word "Endpoint" appears at the cursor.



12. Left-click to place the line.

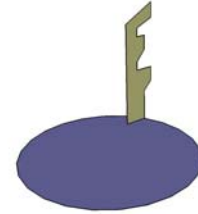
13. Without clicking, position the cursor at the midpoint of the top line. The word "Midpoint" appears at the cursor.



Here is an example to explain the "Follow Me" function further.  
 You can also select a face or a line and get a profile to follow the edges of the face or line.  
 This method is often simpler to use.

Drawing example "Round forms" with "Follow me":

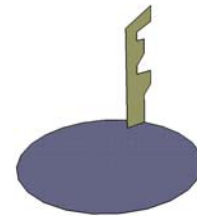
1. On the right there is a circle with a shape beside it.



2. Click the "Select" button in the "Principal" toolbar or press the spacebar.



3. Click on the circle face that the profile is to follow.  
 The face is highlighted.

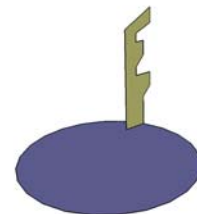


4. Click the "Follow me" button in the "Edit" toolbar.

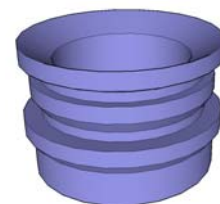


5. Position the cursor over the shape.  
 It is highlighted.

6. Left-click.



7. The profile follows the edge of the circle and forms a volume.

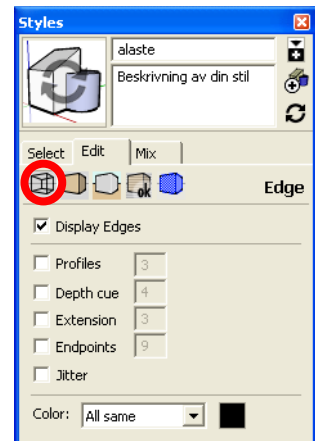


**Edge settings:**

Under the "Edge Settings" button, choose how edges are to be displayed.

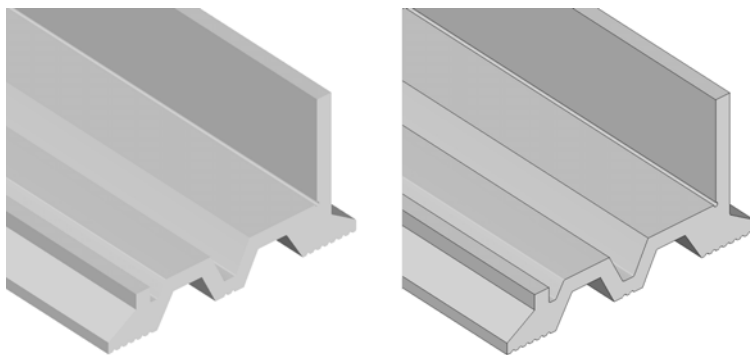
Read more about the various options below.

Read more about how to create your own styles on page 60.



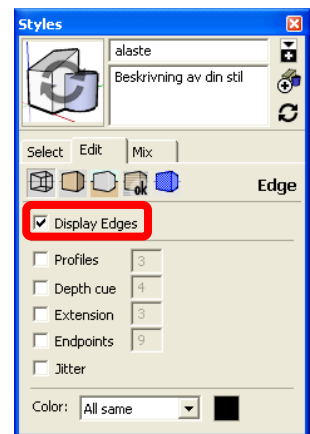
**Display Edges:**

The model is displayed with or without "Edges".



"Edges" disabled.

"Edges" enabled.

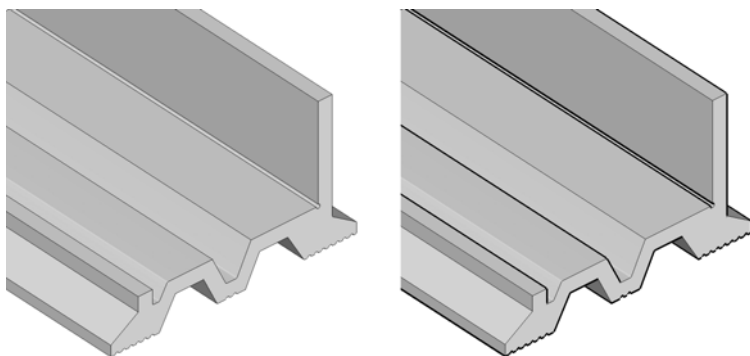


**Profiles:**

The model is displayed with or without enhanced "Profiles".

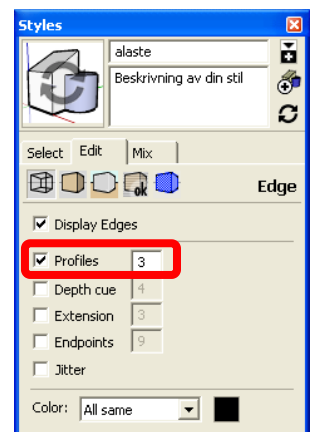
This enhances the profile lines on the model.

The thickness of the lines is specified in pixels. The smallest value is 1 and the greatest is 20.



"Profiles" disabled.

"Profiles" enabled.



## Adding text

The Text tool is very versatile. When you add text you get default values, depending on where you point.

You can also choose different fonts, text heights and colors. Text heights can be specified in pixels or in fixed units.

Read more about the settings on page 128.

### Text with arrow:

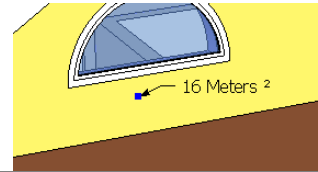
1. Click the "Text" button in the "Construction" toolbar.



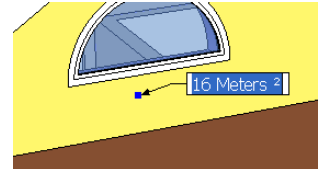
2. Position the cursor over the object you want to connect the leader line to.



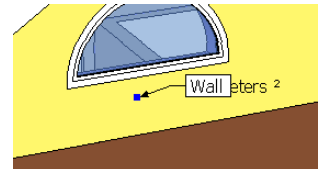
3. Left-click to place the leader line.  
(As you can see, a default value appears, but it disappears when you enter your text.)



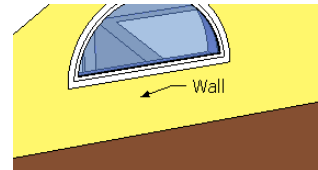
4. Position the text.



5. Enter the text you want.  
There is no need to erase the default text.  
For line feed, press <Enter> as usual.



6. To finish, press <Enter> twice.



The default text is based on where you point.

If you:

- point to a face, the default value is the area of the face.
- point to a line, the default value is the length of the line.
- point to an endpoint, the default value is the coordinate value.
- point to a component or group, the name of the component/group is offered as a predefined value.